

Model LEP-SJ68BPP-CV3R

Overview



The LEP (Low Efficiency Photoluminescence) are integrated PL imaging components specially developed for the low excitation efficiency of raw silicon wafers. They can transmit the PL images of raw silicon wafers to the PC through a gigabit network. Users can use image recognition related technologies to judge and identify defects in the imaging, and cooperate with automation to eliminate them. Typical types of defects that can be detected are: hidden crack, broken edge, black center, concentric circle, scratch, belt mark and dirty.

LEP can help users eliminate defective chips in the front-end of the process to increase the production of A-grade chips, and also provide timely feedback and warning of defects in the process; It can help users identify potential product defects during the loading of raw silicon wafers, so as to make timely adjustments on site and reduce the potential waste of raw material costs in the future. In the context of increasingly large and thin silicon wafers, traditional contact detection is difficult to effectively control the fragmentation rate. However, non-destructive testing of laser PL will become an essential detection method and a standard product for removing defective products in the photovoltaic process.

Characteristics

Adopting integrated structure design, solve the on-site debugging troubles.

High-power laser PL to meet the testing requirements of raw silicon wafers.

Higher compatibility, covering all processes from raw silicon wafer to sorting.

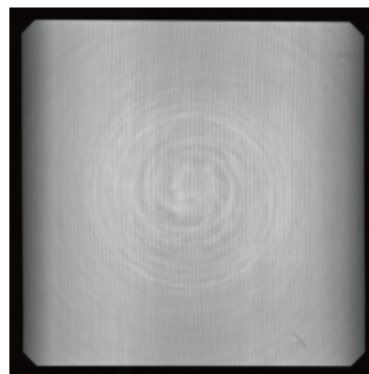
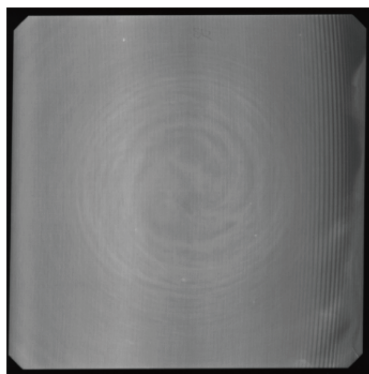
Main Parameters

Process	<input checked="" type="checkbox"/> Raw Silicon Wafer <input checked="" type="checkbox"/> Screen Printing	<input checked="" type="checkbox"/> Texturing <input checked="" type="checkbox"/> Post-Furnacing	<input checked="" type="checkbox"/> Front-PE <input checked="" type="checkbox"/> Post-EL	<input checked="" type="checkbox"/> Post-PE
Size	<input checked="" type="checkbox"/> 182mm	<input checked="" type="checkbox"/> 210mm	<input checked="" type="checkbox"/> 230mm	
Object Distance	<input checked="" type="checkbox"/> 316mm	<input type="checkbox"/> 336mm	<input type="checkbox"/> 356mm	
Resolution Ratio Voltage	<input checked="" type="checkbox"/> 512	<input type="checkbox"/> 1K		
Beat (Pcs/h)	<input checked="" type="checkbox"/> 3600	<input type="checkbox"/> 5000	<input type="checkbox"/> 6000	
Product Form	<input checked="" type="checkbox"/> Imaging Components			

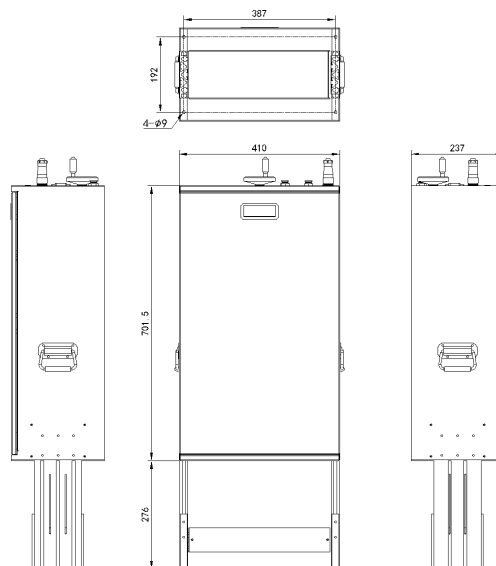
Other Parameters

Parameter	Unit	Typical Value
Power	W	200
Linewidth	mm	1-2
Safety Level		Class 4
Input	AC V	220
Ambient Temperature	°C	+10 ~ +35
Storage Temperature	°C	-20 ~ +60
Dimension	mm	410*237*977.5
Overall Weight	Kg	15

Application Display



Dimensions (mm)



Caution

1. Please keep the laser emission port unobstructed and avoid eye exposure to the laser directly.
2. Please do not plug or unplug laser power plug with electricity to prevent laser breakdown.
3. Please contact the manufacturer promptly in case of any malfunction.
Do not disassemble it to avoid damaging internal precision components.

